

**Clint Wehrman**  
Director of Purchasing  
Lubbock County  
P.O. Box 10536  
Lubbock, Texas 79408-3536  
(806) 775-1015  
Fax: (806) 775-7981



December 31, 2025

---

**Addendum #1**  
**ITB 261201**  
**LANDSCAPE SERVICES**

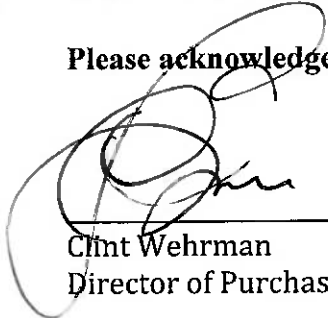
---

**The following has been incorporated into ITB 261201:**

1. Landscape Plan for the facility.

**End of Addendum #1**

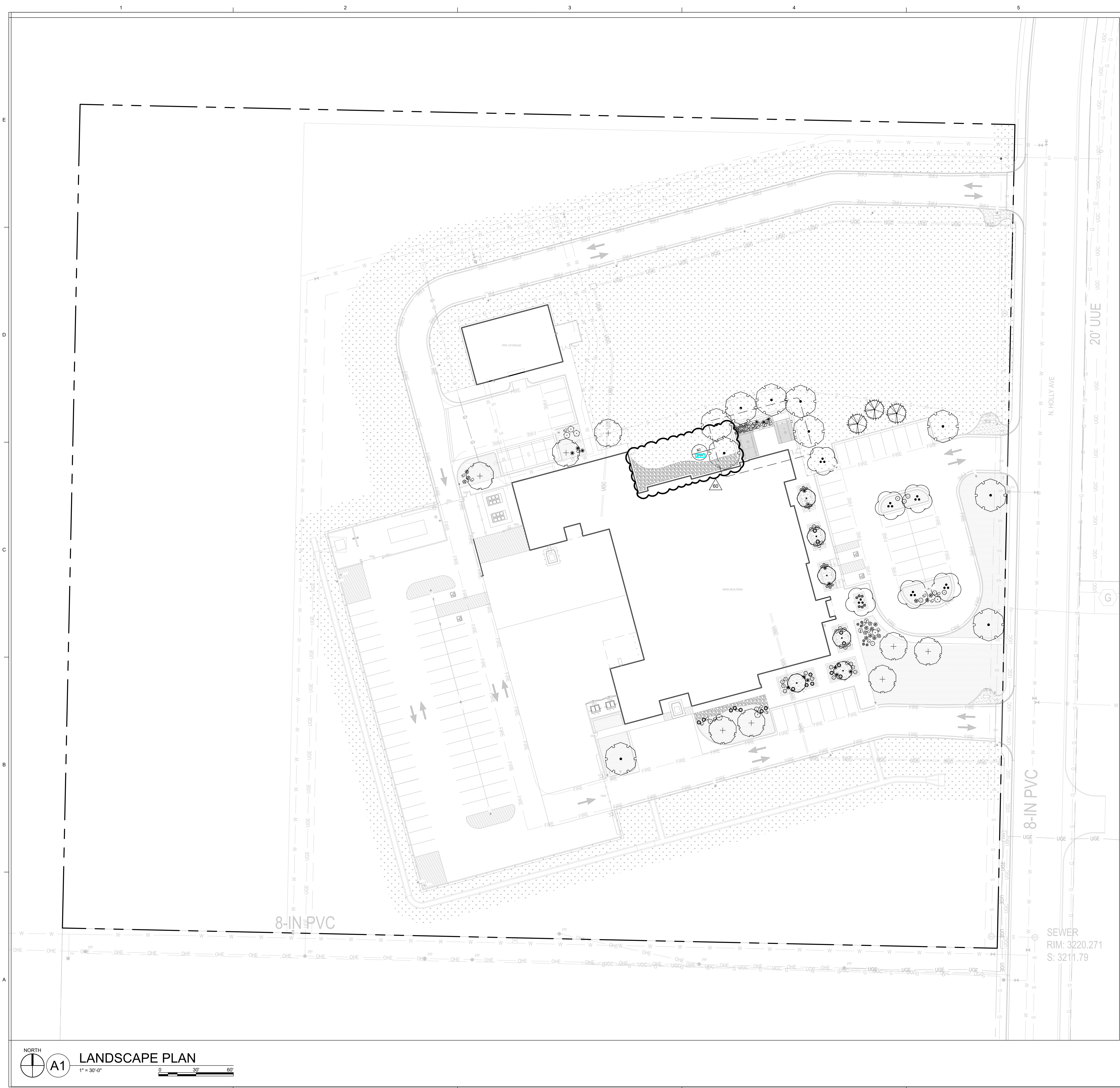
**Please acknowledge receipt of this addendum with your Vendor Acknowledgement Form.**



---

Clint Wehrman  
Director of Purchasing





GENERAL SHEET NOTES

- A. PRIOR TO BEGINNING WORK ON THE PROJECT, REVIEW THE PROJECT IN THE FIELD WITH THE OWNER'S REPRESENTATIVE.  
B. REFER TO CIVIL DRAWINGS FOR GRADING AND DRAINAGE INFORMATION. DO NOT RELY ON LANDSCAPE DRAWINGS FOR GRADING INFORMATION.  
C. LOCATE UNDERGROUND UTILITIES PRIOR TO COMMENCEMENT OF PLANTING AND IRRIGATION OPERATIONS.  
D. IF DISCREPANCIES OCCUR BETWEEN THE DRAWINGS AND THE SITE CONDITIONS, NOTIFY THE OWNER'S REPRESENTATIVE FOR CLARIFICATION PRIOR TO PROCEEDING ON THAT PORTION OF THE WORK.  
E. PLANT MATERIAL MUST BE NURSERY GROWN, AND PLANTS SHALL BEAR THE SAME RELATION TO FINISHED GRADE AS IN ORIGINAL NURSERY CONDITION.  
F. MINIMUM INSTALLATION SIZES FOR PLANT MATERIAL VARY BY SPECIES. SEE PLANT SCHEDULE.  
G. VERIFY PLANT QUANTITIES. PLANT QUANTITIES ARE SHOWN FOR INFORMATIONAL PURPOSES ONLY.  
H. LANDSCAPE GRAVEL MULCH AREAS SHALL BE COVERED WITH LANDSCAPE WEED BARRIER FABRIC PRIOR TO MULCHING IN ORDER TO MINIMIZE WEED GROWTH AND HELP MAINTAIN SOIL MOISTURE.  
I. SOIL AMENDMENTS ARE REQUIRED FOR ALL PLANTINGS. SEE SPECIFICATIONS.  
J. NATIVE SOILS MAY BE USED FOR LANDSCAPE INSTALLATION, BUT SHALL BE BLENDED WITH AMENDMENTS AND/OR COMPOST. SEE SPECIFICATIONS.  
K. WHERE MULCH IS ADJACENT TO CONCRETE OR ASPHALT, FINISH GRADE OF MULCH SHALL BE 1/2" BELOW TOP OF PAVING, UNLESS OTHERWISE INDICATED.

PLANT LEGEND

TREES	COMMON / BOTANICAL NAME
	TEXAS REDBUD CERCIS CANADENSIS TEXENSIS
	DESERT WILLOW CHILOPSIS LINEARIS 'WARREN JONES' TM
	AFGHAN PINE PINUS ELDARICA
	LIVE OAK QUERCUS VIRGINIANA
	CHINESE PISTACHE PISTACIA CHINENSIS
SHRUBS	COMMON / BOTANICAL NAME
	COMPACT TEXAS SAGE LEUCOPHYLLUM FRUTESCENS 'COMPACTA'
	PEACH DRIFT® ROSE ROSA 'MEIGGIL'
ACCENT/GRASSES	COMMON / BOTANICAL NAME
	FROSTY BLUE WHALE'S TONGUE AGAVE AGAVE OVATIFOLIA 'FROSTY BLUE'
	BLONDE AMBITION BLUE GRAMA BOUTELLOUA GRACILIS 'BLONDE AMBITION'
	TEXAS SOTOL DASYLIIRION TEXANUM
	RED YUCCA HESPERALOE PARVIFLORA
	MORNING LIGHT EULALIA GRASS MISCANTHUS SINENSIS 'MORNING LIGHT'
ANNUAL/PERENNIALS	COMMON / BOTANICAL NAME
	NEW GOLD LANTANA LANTANA X 'NEW GOLD'
	FIRECRACKER PENSTEMON PENSTEMON EATONII
	RASPBERRY DELIGHT SAGE SALVIA X 'RASPBERRY DELIGHT'
	GERMANDER TEUCRIUM CHAMAEDRYS

LEGEND

- 3/4" DIA. ANGULAR GRAVEL MULCH 3" DEPTH OVER FILTER FABRIC. COLOR: CHEROKEE BROWN
- 1 1/2" DIA. ROUNDED GRAVEL MULCH 3" DEPTH OVER FILTER FABRIC. COLOR: DESERT ROSE
- NON-IRRIGATED SEED MIX
- 2-4" DIA. ROUNDED COBBLE MULCH 4" DEPTH OVER FILTER FABRIC. COLOR: COLORADO RIVER
- GOLD QUARTZITE LANDSCAPE BOULDERS, SIZE 18 CF OR LARGER. BOULDER SELECTION AND BOULDER PLACEMENT SHOULD BE APPROVED BY LANDSCAPE ARCHITECT PRIOR TO FINAL INSTALLATION.

DEKKER  
PERICH  
SABATINI

Architecture  
in Progress



SEAL

PROJECT

Lubbock County Medical Examiners Office

3711 N. Holly Avenue  
Lubbock, TX 79403

ISSUED FOR  
PERMIT

REVISIONS

- 05/10/2024 ASI- 023
- 05/27/2025 ASI- 054
- 08/13/2025 ASI- 057

DRAWN BY CS  
REVIEWED BY JD  
DATE 09/29/2023  
PROJECT NO. 22-4001.001

DRAWING NAME  
LANDSCAPE  
PLAN

SHEET NO.

P101